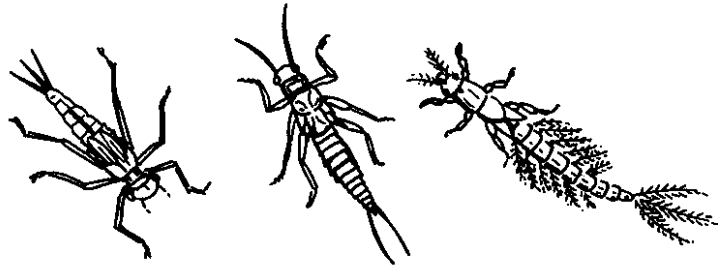


Worksheet 5.1-1.1:

POLLUTION DETECTIVES IN RIVERS

Directions: Macroinvertebrates with higher scores can be found in cleaner waters, macroinvertebrates with lower scores can be found in polluted waters. Count the number of individuals of each sort you find and write the results in Worksheet “Water quality analysis”.

CLEAN WATER



5

Damselfly nymph

Stonefly nymph

Mayfly nymph



4

Diving beetle

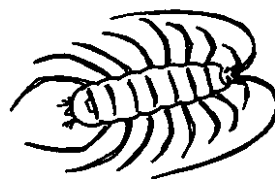
Caddisfly larva

Water boatman



3

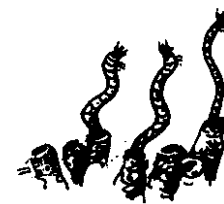
Amphipod Crustacean



2

Isopod Crustacean

Mollusc (pond snail)



1

Leech

Bloodworms

POLLUTED WATER

References: Experiment adopted from **Environmental Education Activities for Primary Schools**, Unesco – UNEP.