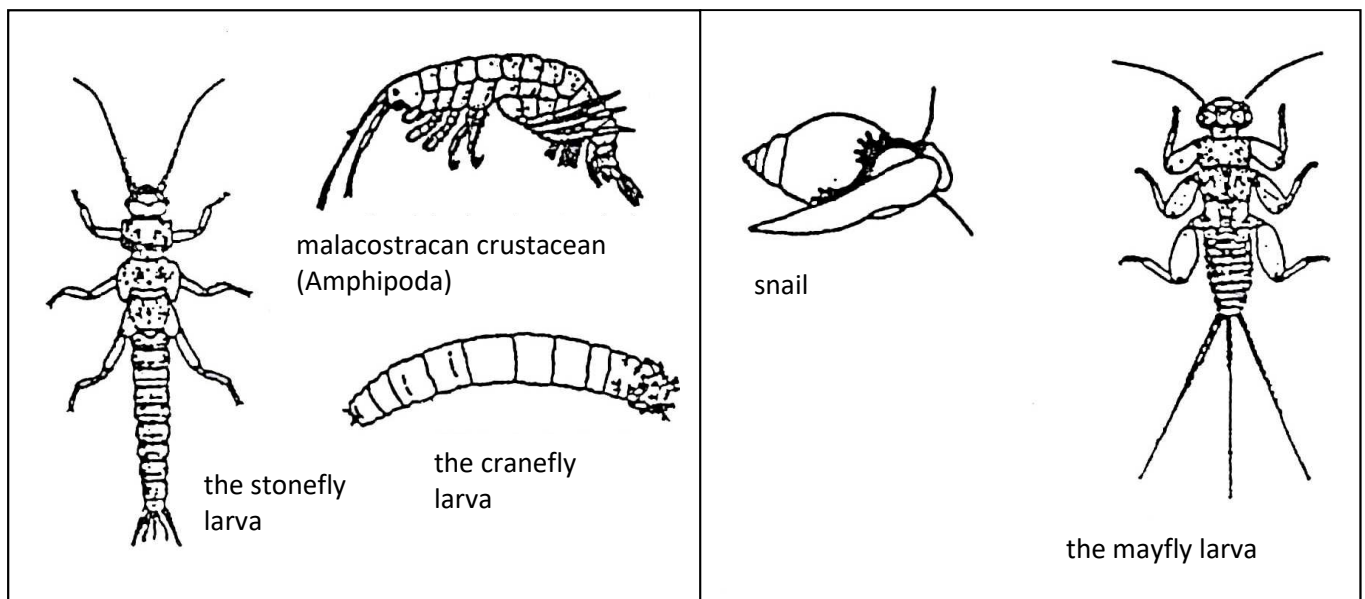


Worksheet 3.1-2.2:

ADAPTATIONS TO THE RIVER CONDITIONS

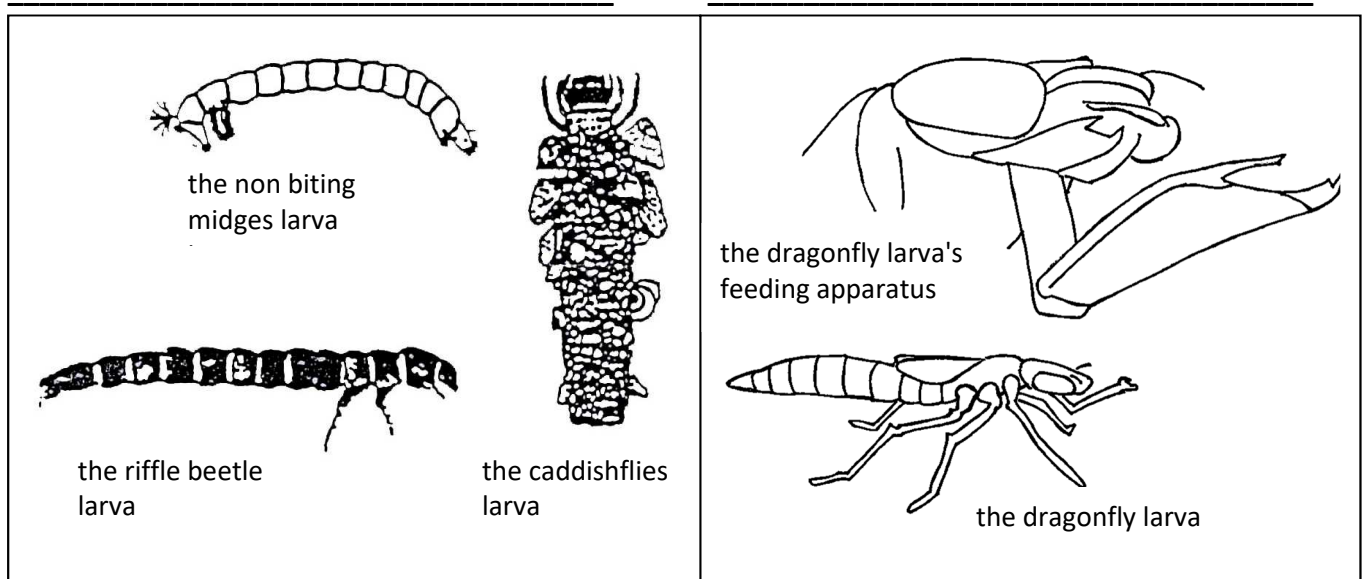
Directions: Remember what the living conditions in a river at each separate section are, because small water organisms that mostly live in the river's bottom are adapted to those conditions. Their diet is dependent on the conditions in the river. In the river, where ever there are individual groups of organisms, you can find specific adaptations of these organisms depending on how they feed: shredders crush food, scrapers scrape it out of stones, collectors collect food both by gathering and filtering, and predators prey on other organisms, catching them and eating them.

Adaptations of small water organisms (macroinvertebrates):



SHREDDERS:

SCRAPERS:



COLLECTORS:

PREDATORS: